

The Lamp of the Body

On the line below each lamp, write the word that appears with the matching lamp in the box at the bottom of the page to discover Jesus' instruction found in Matthew 6:22.

The



lamp



of



the



body



is



the



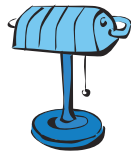
eye



If



therefore



your



eye



is



good



your



whole



body



will



be



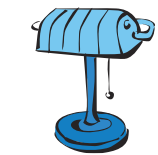
full



of



light



therefore



whole



full



of



lamp



your



is



eye



if



light



good



be



the



body



will